



Heating & Cooling Systems



2025 Puron Advance™ Product Roadmaps



AIR CONDITIONER ROADMAP

Puron®

Puron Advance™

EVOLUTION™ SYSTEM



186CNV
Up to 26.0 SEER2
Variable-Speed

No Puron Advance conversion - use 293VAN Heat Pump as an alternative.



189BNV
Up to 19.0 SEER2
Five-Stage

191VAN
Up to 21.0 SEER2
Variable-Speed

PREFERRED™ SERIES



127T(A/B)N
Up to 17.5 SEER2
Two-Stage
Includes Coastal Model

148TAN
Up to 18.0 SEER2
Two-Stage
IntelliSense Technology
Includes Coastal Model



126S
Up to 16.5 SEER2
Single-Stage

146SAN
Up to 16.5 SEER2
Single-Stage
IntelliSense Technology

LEGACY™ LINE

No Puron Advance conversion - use 37MURA/37MUHA heat pump as an alternative



315S
At 14.3 SEER2
(under 45k BTU)
At 13.8 SEER2
(over 45k BTU)
Single-Stage
Horizontal Discharge

135SAN
At 14.3 SEER2
(under 45k BTU)
At 13.8 SEER2
(over 45k BTU)
Single-Stage
Includes Coastal Model



115S
At 14.3 SEER2
(under 45k BTU)
At 13.8 SEER2
(over 45k BTU)
Single-Stage
Includes Coastal Model

134SAN
At 13.4 SEER2
Single-Stage

114S
At 13.4 SEER2
Single-Stage

Air Conditioners	1	2	3	4	5	6	7	8-9	10	11	12
Title	Airflow Type	Refrigerant Type / Tier	Efficiency	Design Type	Major Series	Voltage	Open	Nominal Cooling Capacity	Feature	Special Feature	Region
Product #/Letter	1	4	8	T	A	N	0	18	0	0	W
Descriptions	1 = Vertical Discharge 3 = Horizontal Discharge	3 = Puron Advance Legacy 4 = Puron Advance Preferred 9 = Puron Advance Evolution	4 = North Compliant 5 = Southwest Compliant 6 = 16.0 SEER2 7 = 17.0 SEER2 8 = 18.0 SEER2 0 = 20.0 SEER2 1 = 21.0 SEER2 2 = 22.0 SEER2 3 = 23.0 SEER2	S = Single-Stage T = Two-Stage V = Variable-Speed	A - Z	N = 208-230-1 or 208/230-1 P = 208-230-3 or 208/230-3 E = 460-3	0	18 = 1.5 tons 24/25 = 2 tons 30 = 2.5 tons 36/37 = 3 tons 42/43 = 3.5 tons 48/49 = 4 tons 60/61 = 5 tons	0 = Standard C = Coastal	0 = Standard	E = Std SE N = Std North W = Std SW

AIR CONDITIONER ROADMAP - RESIDENTIAL NEW CONSTRUCTION -

Puron®

Puron Advance™

Builder



GA7TAN4
Up to 17.5 SEER2
Two-Stage

GA5SAN4
At 14.3 SEER2 (under 45k BTU)
At 13.8 SEER2 (over 45k BTU)
Single-Stage

GA4SAN4
At 13.4 SEER2
Single-Stage

GA8TAN5
Up to 18.0 SEER2
Two-Stage

GA5SAN5
At 14.3 SEER2 (under 45k BTU)
At 13.8 SEER2 (over 45k BTU)
Single-Stage

GA4SAN5
At 13.4 SEER2
Single-Stage



3-Phase Legacy



113A
Up to 13.0 SEER
Single-Stage

134SAN
Up to 13.4 SEER2
Single-Stage



3-Phase Builder



BA16(P,E)
Up to 16.0 SEER
Single-Stage

No Puron Advance Conversion -
use GH8T 3-phase heat pump
as an alternative

Builder Air Conditioners	1	2	3	4	5	6	7	8 - 9	10	11	12
Title	Brand	Product Type	Efficiency	Design Type	Major Series	Voltage	Refrigerant Type	Nominal Cooling Capacity	Feature	Special Feature	Region
Product #/Letter	G	A	4	S	A	N	5	36	0	0	W
Descriptions	G= Builder	A = AC	4 = North Compliant 5 = Southwest Compliant 6 = 16.0 SEER2 7 = 17.0 SEER2 8 = 18.0 SEER2 9 = 19.0 SEER2 0 = 20.0 SEER2 1 = 21.0 SEER2 2 = 22.0 SEER2	S = Single-Stage T = Two-Stage	A - Z	N = 208-230-1 or 208/230-1 P = 208-230-3 or 208/230-3 E = 460-3	5 = Puron Advance	18 = 1.5 tons 24/25 = 2 tons 30 = 2.5 tons 36/37 = 3 tons 42/43 = 3.5 tons 48/49 = 4 tons 60/61 = 5 tons	0= Standard	0= Standard	E = Std SE N = Std North W = Std SW

HEAT PUMP ROADMAP

Puron®

EVOLUTION™ SYSTEM



284ANV
Up to 22.0 SEER2
Variable-Speed

288BNV
Up to 18.0 SEER2
Five-Stage

Puron Advance™

291VAN
Up to 21.0 SEER2
Cold Climate Heat Pump
Variable-Speed

293VAN
Up to 23.0 SEER2
Variable-Speed

290VAN
Up to 20.0 SEER2
Variable-Speed



PREFERRED™ SERIES



227T(A/B)N
Up to 17.5 SEER2
Two-Stage
Includes Coastal Model

225S
Up to 16.0 SEER2
Single-Stage

38MURAQAB3**
Up to 20.0 SEER2
Variable-Speed

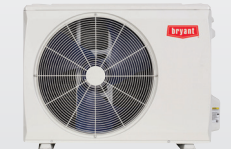
38MURAQAA3**
Up to 17.0 SEER2
Variable-Speed



248TAN
Up to 18.0 SEER2
Two-Stage
IntelliSense Technology
Includes Coastal Model

246SAN
Up to 16.0 SEER2
Single-Stage
IntelliSense Technology

37MUHAQ
Up to 20.0 SEER2
Variable-Speed



LEGACY™ LINE



215S
Up to 15.2 SEER2
Single-Stage
Includes Coastal Model

37MURAQ
Up to 18.0 SEER2
Variable-Speed

235SAN
Up to 16.0 SEER2
Single-Stage
Includes Coastal Model



Heat Pumps	1	2	3	4	5	6	7	8 - 9	10	11	12
Title	Airflow Type	Refrigerant Type / Tier	Efficiency	Design Type	Major Series	Voltage	Open	Nominal Cooling Capacity	Feature	Special Feature	Region
Product #/Letter	2	4	8	T	A	N	0	18	0	0	A
Descriptions	2 = Vertical Discharge HP 4 = Horizontal Discharge HP	3 = Puron Advance Legacy 4 = Puron Advance Preferred 9 = Puron Advance Evolution	5 = National Compliant 6 = 16.0 SEER2 7 = 17.0 SEER2 8 = 18.0 SEER2 0 = 20.0 SEER2 1 = 21.0 SEER2 2 = 22.0 SEER2	S = Single-Stage T = Two-Stage V = Variable-Speed	A - Z	N = 208-230-1 or 208/230-1 P = 208-230-3 or 208/230-3 E = 460-3	0	18 = 1.5 tons 24/25 = 2 tons 30 = 2.5 tons 36/37 = 3 tons 42/43 = 3.5 tons 48/49 = 4 tons 60/61 = 5 tons	0 = Standard C = Coastal	0 = Standard	A = Std HP

HEAT PUMP ROADMAP - RESIDENTIAL NEW CONSTRUCTION -

Puron®

Puron Advance™

Builder



GH7TAN4
Up to 17.5 SEER2
Two-Stage

GH5SAN4
At 14.3 SEER2
Single-Stage



GH8TAN5
Up to 18.0 SEER2
Two-Stage
3-Phase Models
Available

GH5SAN5
At 14.3 SEER2
Single-Stage

3-Phase Preferred



226C
Up to 16.0 SEER
Single-Stage

No Puron Advance Conversion -
use GH8T 3-phase heat pump
as an alternative

3-Phase Legacy



214D
At 14.0 SEER
Single-Stage

235S
At 14.3 SEER2
Single-Stage



Builder Heat Pumps	1	2	3	4	5	6	7	8 - 9	10	11	12
Title	Brand	Product Type	Efficiency	Design Type	Major Series	Voltage	Refrigerant Type	Nominal Capacity	Feature	Special Feature	Region
Product #/Letter	G	H	8	T	A	N	5	18	0	0	W
Descriptions	G = Builder	H = HP	5 = National Compliant 6 = 16.0 SEER2 7 = 17.0 SEER2 8 = 18.0 SEER2 9 = 19.0 SEER2 0 = 20.0 SEER2 1 = 21.0 SEER2 2 = 22.0 SEER2 3 = 23.0 SEER2	S = Single-Stage T = Two-Stage	A - Z	N = 208-230-1 or 208/230-1 P = 208-230-3 or 208/230-3 E = 460-3	5 = Puron Advance	18 = 1.5 tons 24/25 = 2 tons 30 = 2.5 tons 36/37 = 3 tons 42/43 = 3.5 tons 48/49 = 4 tons 60/61 = 5 tons	0 = Standard	0 = Standard	A = Std HP E = SE N = Std North W = Std SW

Crossover - Outdoor Units	1	2	3 - 4	5	6	7	8 - 9	10	11	12
Title	Product	Refrigerant	Model Type	Major Series	Unit Type	Nominal Capacity (BTUH)	# of Indoor Units	Variation	Electrical	
Product #/Letter	3	7	MU	R	A	36	A	A	3	
Descriptions	3 = Horizontal Discharge	7 = Puron Advance	MU = Unitary	R = Entry-Tier H = Mid-Tier	A - Z	Q = Heat Pump C = Cooling Only	18/19 = 18,000 24/25 = 24,000 30/31 = 30,000 36/37 = 36,000 42/43 = 42,000 48/49 = 48,000 60/61 = 60,000	X = 0 A = 1 B = 2 C = 3 D = 4 E = 5	1 = 115/1/60 3 = 208-230/1/60	

FAN COIL ROADMAP

Puron®

Puron Advance™

EVOLUTION™ SYSTEM



FE4B
Variable-Speed
VCA Motor
Fully Communicating



FE5B
Variable-Speed
VCA Motor
Fully Communicating

PREFERRED™ SERIES



FT4B
Two-Stage
VCA Motor
InteliSense Technology



FT5
Two-Stage
VCA Motor
InteliSense Technology

LEGACY™ LINE



FJ4D
Single-Stage
FCT-5 Motor



FJ5
Single-Stage
FCT-5 Motor

Builder



FG4
Two-Stage
VCA Motor



FG5
Two-Stage
VCA Motor

Fan Coils	1	2	3	4	5	6	7	8 - 9	10	11 - 12
Title	Product	Type / Tier	Refrigerant Type	Major Series	Electrical	Cabinet/ Expansion Device	Cabinet Width	Nominal Cooling Capacity	Coil Type	Electric Heater Size
Product #/Letter	F	J	5	A	N	X	B	42	L	00
Descriptions	F = Fan Coil	J = Legacy Series T = Preferred Series E = Evolution Series G = Builder Series Two-Stage	5 = Puron Advance	A - Z	N = 208/230V, 1ph - 60hz	B = 2-piece, TXV X = 1-piece, TXV	A = 14" B = 17" C = 21" D = 24"	18 = 18,000 24 = 24,000 30 = 30,000 36 = 36,000 42 = 42,000	L = Aluminum	00 = No heat 05 = 5kW 08 = 8kW 10 = 10kW 15 = 15kW

Motor Key: VCA = Variable-Speed Constant Airflow Motor | FCT = Fixed-Speed Constant Torque Motor | PSC = Permanent Split Capacitor

FAN COIL ROADMAP

- MULTIFAMILY & CROSSOVER -

Puron®

Puron Advance™

Multifamily



FMA4X
Single-Stage
FCT-5 Motor

FMA4P
Single-Stage
PSC Motor

FM(C/U)4Z
Single-Stage
FCT-5 Motor

FM(C/U)4X
Single-Stage
PSC Motor

FMA5X
Single-Stage
FCT-5 Motor

FMA5L
Single-Stage
PSC Motor

FM(C/U)5Z
Single-Stage
FCT-5 Motor

FM(C/U)5X
Single-Stage
PSC Motor



Crossover



40MUAQAQ
Preferred Series
Multi-Speed
ECM Motor

NEW

45MUAHAQ*
Preferred Series
Multi-Speed
ECM Motor

45MUAQAQ*
Legacy Line
Multi-Speed
ECM Motor



* This coil is to be used only with the 37MUHAQ and 37MURAQ heat pumps only.

Multifamily Fan Coils	1	2	3	4	5	6 - 7	8 - 9	10	11
Title	Unit	Type	Installation Type	Refrigerant	Metering Device	Nominal Capacity (BTUH)	Electric Heater Size	Revision	Sales Code/ Features
Product #/Letter	F	M	U	5	Z	18	00	A	L
Descriptions	F = Fan Coil	M = Multifamily	U = Uncased ¹ C = Cased ¹ A = Apartment ²	5 = Puron Advance	X = TXV & PSC Motor ¹ Z = TXV & ECM Motor ¹ L = TXV & PSC Motor ² X = TXV & ECM Motor ²	18 = 18,000 = 1.5 tons 24 = 24,000 = 2 tons 30 = 30,000 = 2.5 tons 36 = 36,000 = 3 tons	00 = No Heat ^{1,2} 05 = 5kW ² 08 = 7.5kW ² 10 = 10kW ² ## = kW size	A = Mktg Revision	L = Aluminum Coils

¹ Ceiling Mount model ² Wall Mount model

Crossover - Indoor Units	1	2	3 - 4	5	6	7	8 - 9	10	11	12
Title	Product	Refrigerant	Model Type	Major Series	Unit Type	Nominal Capacity (BTUH)	Not Used	Variation	Electrical	
Product #/Letter	4	5	MU	A	A	36	X	X	3	
Descriptions	4 = Indoor Unit	5 = Puron Advance	MU = Unitary	L = Coil A = Entry-Tier Air Handler H = Mid-Tier Air Handler	A - Z	Q = Heat Pump C = Cooling Only	18/19 = 18,000 24/25 = 24,000 30/31 = 30,000 36/37 = 36,000 42/43 = 42,000 48/49 = 48,000 60/61 = 60,000	A - Z	1 = 115/1/60 3 = 208-230/1/60	

SMALL PACKAGED PRODUCTS ROADMAP

Puron®



577E
Year-Round Air Conditioner
Two-Stage Operation

707E
Packaged Air Conditioner
Two-Stage Operation

677E
Dual-Fuel
Two-Stage Operation

607E
Packaged Heat Pump
Two-Stage Operation

Puron Advance™

575E
Year-Round Air Conditioner
Two-Stage Operation

675E
Dual-Fuel
Two-Stage Operation

605E
Packaged Heat Pump
Two-Stage Operation

PREFERRED™ SERIES



Note: All Preferred Series models meet or exceed 15.2 SEER2.



577C
Year-Round Air Conditioner
Single-Stage Operation

707C
Packaged Air Conditioner
Single-Stage Operation

677C
Dual-Fuel
Single-Stage Operation

607C
Packaged Heat Pump
Single-Stage Operation

575C
Year-Round Air Conditioner
Single-Stage Operation

705C
Packaged Air Conditioner
Single-Stage Operation

675C
Dual-Fuel
Single-Stage Operation

605C
Packaged Heat Pump
Single-Stage Operation

LEGACY™ LINE



Note: All Legacy Line models meet or exceed 13.4 SEER2.



PA4Z
Packaged Air Conditioner
Single-Stage Operation

PH4Z
Packaged Heat Pump
Single-Stage Operation

PA5Z
Packaged Air Conditioner
Single-Stage Operation

PH5Z
Packaged Heat Pump
Single-Stage Operation

Manufactured Housing



Small Packaged Products (G-Chassis)	1 - 2 - 3 - 4	5	6	7	8 - 9	10 - 11 - 12	13	14
Title	Unit Family/Type	Voltage	Fuel & Controls	Major Series	Cooling Capacity	Heating Size	Low NOx	Minor Series
Product #/ Letter	575C	N	W	B	36	---	N	A
Description	575C = Packaged Year-Round AC 705C = Packaged AC 605C = Packaged HP 675C = Packaged Dual-Fuel 575E = Two-Stage Year-Round AC 605E = Two-Stage HP 675E = Two-Stage Dual-Fuel	N = 208/230-1ph P = 208/230-3ph E = 460-3ph	X = No Gas Heat W = Natural Gas	A - Z	24 = 2 Ton 30 = 2.5 Ton 36 = 3 Ton 42 = 3.5 Ton 48 = 4 Ton 60 = 5 Ton	--- = No Gas Heat 040 = 40K BTU 060 = 60K BTU 090 = 90K BTU 115 = 115K BTU 130 = 130K BTU	-- = Standard NOx N = Low NOx U = Ultra-Low NOx	A - Z

Small Packaged Products (MH Chassis)	1 - 2 - 3 - 4	5	6	7 - 8 - 9	7 - 8 - 9
Title	Unit Family/Type	Voltage	Major Series	Cooling Capacity	Heating Size
Product #/ Letter	PA5Z	N	B	024	000
Description	PA5Z = Dedicated Horizontal AC PH5Z = Dedicated Horizontal HP	N = 208/230-1ph	A - Z	024 = 2 Ton 030 = 2.5 Ton 036 = 3 Ton 042 = 3.5 Ton 048 = 4 Ton 060 = 5 Ton	000 = No Gas Heat

SMALL PACKAGED PRODUCTS ROADMAP

- LOW NO_x & ULTRA-LOW NO_x -

Puron®

Puron Advance™

Low NO_x

PREFERRED™
SERIES



577E
Year-Round Air Conditioner
Two-Stage Operation

677E
Dual-Fuel
Two-Stage Operation

575E
Year-Round Air Conditioner
Two-Stage Operation

675E
Dual-Fuel
Two-Stage Operation



577C
Year-Round Air Conditioner
Single-Stage Operation

677C
Dual-Fuel
Single-Stage Operation

575C
Year-Round Air Conditioner
Single-Stage Operation

675C
Dual-Fuel
Single-Stage Operation



LEGACY™
LINE

Ultra-Low NO_x

PREFERRED™
SERIES



577E
Year-Round Air Conditioner
Two-Stage Cooling
Single-Stage Heating

575E
Year-Round Air Conditioner
Two-Stage Cooling
Single-Stage Heating



577C
Year-Round Air Conditioner
Single-Stage Operation

575C
Year-Round Air Conditioner
Single-Stage Operation



LEGACY™
LINE

FURNACE COIL ROADMAP

Puron®

Puron Advance™

A-Coils



CAPVU
Uncased Vertical

CAPMP
Cased Multi-Poise

CAAVU
Uncased Vertical

CAAMP
Cased Multi-Poise



N-Coil



CNPVP
Cased Vertical

No Puron Advance Conversion

Slab Coil



CSPHP
Cased Horizontal

CSAHP
Cased Horizontal



V-Coils



CVPVA
Cased Vertical
Vertex™ Technology
CVPMA*
Cased Multi-Poise
Vertex™ Technology



CVAVA
Cased Vertical
Vertex™ Technology
CVAMA
Cased Multi-Poise
Vertex™ Technology



* Note: V-Coil Puron does not have heat pump variable-speed compatibility.

Crossover

40MULAQ
Multi-Poise

45MULAQ*
Multi-Poise

* This coil is to be used with 37MUHAQ and 37MURAQ heat pumps only.

Furnace Coils	1	2	3	4	5	6 - 7	8 - 9	10	11	12
Title	Component	Coil Type	Refrigerant Type	Coil Configuration	Cabinet Finish	Unit Capacity (BTUH)	Cabinet Width	Major Series	Included Equipment	Variations
Product #/Letter	C	A	A	M	P	18	14	A	M	A
Descriptions	C = Evap Coil	A = A-Coil S = Slab Coil	A = Puron Advance	H = Horizontal M = Multi-Poise V = Vertical (UPFL/DNFL) U = Uncased	P = Painted Cabinet U = Uncased	18-23 = 18,000 24-29 = 24,000 30-35 = 30,000 36-41 = 36,000 42-47 = 42,000 48-51 = 48,000 60+ = 60,000	12 = 11.8" 14 = 14.5" 17 = 17.5" 21 = 21" 24 = 24.5"	A = Revision	M = w/Dissipation System R = Replacement	A = Blank

Vertex Coils	1	2	3	4	5	6 - 7	8 - 9	10	11	12
Title	Component	Coil Type	Refrigerant Type	Coil Configuration	Major Series	Unit Capacity (BTUH)	Cabinet Width	Metering Device	Included Equipment	Variations
Product #/Letter	C	V	A	V	A	36	17	X	M	A
Descriptions	C = Evap Coil	V = V-Coil	A = Puron Advance	V = Cased Vertical Upflow/Downflow M = Cased Multi-Poise	A = Original Release B = 2nd Release, etc.	18-23 = 18,000 24-29 = 24,000 30-35 = 30,000 36-41 = 36,000 42-47 = 42,000 48-51 = 48,000 60+ = 60,000	12 = 11.8" 14 = 14.5" 17 = 17.5" 21 = 21" 24 = 24.5"	X = TXV	M = Micro-Channel w/Dissipation System R = Replacement	A = Blank

Crossover - Indoor Units	1	2	3 - 4	5	6	7	8 - 9	10	11	12
Title	Product	Refrigerant	Model Type	Major Series	Unit Type	Nominal Capacity (BTUH)	Not Used	Variation	Electrical	
Product #/Letter	4	5	MU	A	A	36	X	X	3	
Descriptions	4 = Indoor Unit	5 = Puron Advance	MU = Unitary	L = Coil A = Entry-Tier Air Handler H = Mid-Tier Air Handler	A - Z	Q = Heat Pump C = Cooling Only	18/19 = 18,000 24/25 = 24,000 30/31 = 30,000 36/37 = 36,000 42/43 = 42,000 48/49 = 48,000 60/61 = 60,000	A - Z	1 = 115/160 3 = 208-230/1/60	

GEOTHERMAL ROADMAP

Puron®

Puron Advance™

EVOLUTION™ SYSTEM



GC
VCA Motor
Two-Stage Operation

GZ
Split Water-to-Air
Two-Stage Operation



GCA
VCA Motor
Two-Stage Operation

GZ*SA**
Split Water-to-Air
Two-Stage Operation

PREFERRED™ SERIES



GP
VCA Motor
Two-Stage Operation

GW
Split Water-to-Water
Two-Stage Operation



TBA in 2025

GW*WA**
Split Water-to-Water
Two-Stage Operation

LEGACY™ LINE



GB
VCA Motor
Single-Stage Operation



GBA
VCA Motor
Two-Stage Operation

Geothermal - Packaged Product	1	2	3	4 - 5	6	7	8	9	10	11	12	13	14
Title	Product	Tier	Refrigerant Type	Nominal Cooling Capacity	Cabinet Configuration	Discharge Air Configuration	Return Air Configuration	Coaxial Options	Hot Water Options	Fan Motor Options	Air Coil Coating	Voltage	Dissipation System
Product #/ Letter	G	B	A	36	V	T	L	C	D	C	C	1	D
Description	G = Geothermal	B = Legacy V = Preferred C = Evolution	A = Puron Advance	18 24 30 36 42 48 60 72	V = Vertical H = Horizontal C = Counterflow	T = Top Vert E = End Horiz S = Side Horiz B = Bottom Vert	L = Left Return R = Right Return	C = Copper N = Cupronickel	D = with Desuperheater X = without Desuperheater	C = Multi-Speed Constant Torque (FCT) E = ECM Variable-Speed Constant Air Flow (VCA)	C = Coated Tin Plate T = Tin Plate	1 = 208/230/60/1	D = with Dissipation X = without Dissipation

Geothermal - Split Systems	1	2	3 - 4 - 5	6	7	8	9	10	11	12	13	14
Title	Product	Tier	Nominal Cooling Capacity	Unit Type	Refrigerant Type	Future Use	Coaxial Options	Hot Water Options	Future Use	Air Coil Coating	Voltage	Dissipation System
Product #/ Letter	G	W	036	W	A	X	D	D	X	X	1	D
Description	G = Geothermal	W = Preferred Z = Infinity	024 036 048 060 072 120	W = Water-to-Water Split S = Water-to-Air Split	A = Puron Advance	X = None	GW uses: D = Copper G = Cupronickel GZ uses: C = Copper N = Cupronickel	D = with Desuperheater X = without Desuperheater	X = None	X = No Air Coil	1 = 208/230/60/1	D = with Dissipation X = without Dissipation

DUCTLESS ROADMAP

Puron®

Puron Advance™

EVOLUTION™ SYSTEM

38MPRBQ
Single Zone
Heat Pump

619PHB
High Wall

38MARBQ
Single Zone
Heat Pump

38MGHBQ
Multi-Zone
Heat Pump

38MGRBQ
Multi-Zone
Heat Pump

38MBRCQ
Light Commercial
Heat Pump

619AHBQ
High Wall

40MCCAQ
1-Way Cassette

40MBCQ
4-Way Cassette

40MBCAQ
4-Way Cassette

40MBFAQ
Floor Console

40MBFQ
Console - Ceiling/Floor

40MBDQ
Slim Duct

40MBDAQ
Slim Duct - High Static

40MBABQ
Air Handler

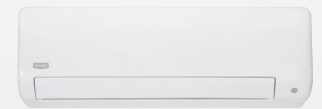
37MPRAQ
Single Zone
Heat Pump

615PHAQ
High Wall

37MAHAQ
Single Zone
Heat Pump

37MGHAQ
Multi-Zone
Heat Pump

37MBHAQ
Light Commercial Heat Pump



PREFERRED™ SERIES

37MGRAQ
Multi-Zone
Heat Pump

37MBRAQ
Light Commercial
Heat Pump

37MARAQ
Single Zone
Heat Pump

615AHAQ
High Wall

45MCCAQ
1-Way Cassette

45MBCAQ
4-Way Cassette

45MBFAQ
Floor Console

45MCFAQ
Console - Ceiling/Floor

45MBDAQ
Slim Duct
Standard and High Static

45MBAAQ
Air Handler

NEW

DUCTLESS ROADMAP

Puron®

Puron Advance™

LEGACY™
LINE

38MHRCQ

Single Zone
Heat Pump

40MHHAQ

High Wall

38MHRDC

Single Zone-
Cooling Only

40MHAC

High Wall -
Cooling Only

37MHRAQ

Single Zone
Heat Pump

45MHHAQ

High Wall

37MHRAC

Single Zone-
Cooling Only

45MHAC

High Wall -
Cooling Only

Value

38MVRAQ

Single Zone
Heat Pump

DHMVHAQ

High Wall

38MTRAQ

Multi-Zone
Heat Pump

37MVRAQ

Single Zone
Heat Pump

D5MVHAQ

High Wall

37MTRAQ

Multi-Zone
Heat Pump

Ductless - Outdoor Units	1	2	3 - 4 - 5	6	7	8 - 9	10	11	12
Title	Product	Refrigerant	Model Type	Major Series	Unit Type	Nominal Capacity (BTUH)	# of Indoor Units	Variation	Electrical
Product #/Letter	3	7	MAR	A	Q	36	A	A	3
Descriptions	3 = Horizontal Discharge	7 = Puron Advance	MAH MAR MBH MBR MGH MGR MHR MPR MTR MVR	A - Z	Q = Heat Pump C = Cooling Only	18/19 = 18,000 24/25 = 24,000 30/31 = 30,000 36/37 = 36,000 42/43 = 42,000 48/49 = 48,000 60/61 = 60,000	X = 0 A = 1 B = 2 C = 3 D = 4 E = 5	A - Z	1 = 115/1/60 3 = 208-230/1/60

Ductless - Indoor Units	1	2	3 - 4	5	6	7	8 - 9	10	11	12
Title	Product	Refrigerant	Model Type	Indoor Type	Major Series	Unit Type	Nominal Capacity (BTUH)	# of Indoor Units	Variation	Electrical
Product #/Letter	4	5	MC	C	A	Q	36	X	X	3
Descriptions	4 = Indoor Unit	5 = Puron Advance	MB MC MH MP	A = Air Handler C = Cassette D = Ducted F = Console H = High Wall	A - Z	Q = Heat Pump C = Cooling Only	18/19 = 18,000 24/25 = 24,000 30/31 = 30,000 36/37 = 36,000 42/43 = 42,000 48/49 = 48,000 60/61 = 60,000	X = 0		1 = 115/1/60 3 = 208-230/1/60

CROSSOVER ROADMAP

Puron®

Puron Advance™

PREFERRED SERIES

38MURAQAB3**
High-Heat Heat Pump

37MUHAQ
Variable-Speed Heat Pump



40MULAQ
Coil

45MULAQ*
Coil



NEW

45MUHAQ*
Air Handler

38MURAQAA3**
Standard Heat Heat Pump

40MUAQA
Air Handler

LEGACY LINE

37MURAQ
Heat Pump

45MUAQA*
Air Handler



* This product is to be used with 37MUHAQ and 37MURAQ heat pumps only.

Crossover - Outdoor Units	1	2	3 - 4	5	6	7	8 - 9	10	11	12
Title	Product	Refrigerant	Model Type	Major Series	Unit Type	Nominal Capacity (BTUH)	# of Indoor Units	Variation	Electrical	
Product #/Letter	3	7	MU	R	A	Q	36	A	A	3
Descriptions	3 = Horizontal Discharge	7 = Puron Advance	MU = Unitary	R = Entry-Tier H = Mid-Tier	A - Z	Q = Heat Pump C = Cooling Only	18/19 = 18,000 24/25 = 24,000 30/31 = 30,000 36/37 = 36,000 42/43 = 42,000 48/49 = 48,000 60/61 = 60,000	X = 0 A = 1 B = 2 C = 3 D = 4 E = 5	A - Z	1 = 115/1/60 3 = 208-230/1/60

Crossover - Indoor Units	1	2	3 - 4	5	6	7	8 - 9	10	11	12
Title	Product	Refrigerant	Model Type	Major Series	Unit Type	Nominal Capacity (BTUH)	Not Used	Variation	Electrical	
Product #/Letter	4	5	MU	A	A	Q	36	X	X	3
Descriptions	4 = Indoor Unit	5 = Puron Advance	MU = Unitary	L = Coil A = Entry-Tier Air Handler H = Mid-Tier Air Handler	A - Z	Q = Heat Pump C = Cooling Only	18/19 = 18,000 24/25 = 24,000 30/31 = 30,000 36/37 = 36,000 42/43 = 42,000 48/49 = 48,000 60/61 = 60,000		A - Z	1 = 115/1/60 3 = 208-230/1/60

MINI-VRF ROADMAP

Puron®

Puron Advance™

Outdoor Unit

38VMH-1P
Single Phase
Heat Pump

37VMH-1P
Single Phase
Heat Pump



Indoor Units

40VMV
Vertical AHU

45VMV
Vertical AHU

40VMC
Compact
4-Way Cassette

45VMC
Compact
4-Way Cassette

40VMF
4-Way Cassette

45VMF
4-Way Cassette

40VMW
High Wall

45VMW
High Wall

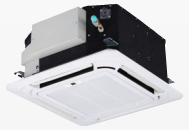
40VML
Low Static
Ducted Unit

45VML
Low Static
Ducted Unit

40VMM
Medium Static
Ducted Unit

45VMM
Medium Static
Ducted Unit

40VMI
1-Way Cassette



40VMR
Recessed Console
Unit

40VMU
Underceiling /
Console Unit

40VMH
High Static
Ducted Unit

40VMW
High Wall

40VMV
Vertical AHU

40VMA
Outside Air Unit

40VMZ
Reheat Unit

TBA
Winter 2025

VRF Outdoor	1 - 2	3 - 4	5	6 - 7 - 8	9	10	11	12	13	14
Title	Product	Product Type	Revision Number	Nominal Capacity	System Type	Variations	Cabinet Type	Voltage	Blank	Packaging
Product #/Letter	37	VM	A	036	H	D	S	3	-	3
Descriptions	37 = Outdoor Unit	VM = VRF	A = No Revision B = Design Revision	036 = 3 ton 048 = 4 ton 060 = 5 ton	H = Heat Pump	D = Domestic	S = Standard	3 = 208/230-1-60		3 = USA & Canada

VRF Indoor	1 - 2	3 - 4	5	6 - 7 - 8	9	10	11	12
Title	Product	Product Type	Model Number Modifier	Nominal Capacity	Revision Number	Undefined Placeholder	Undefined Placeholder	Voltage
Product #/Letter	45	VM	F	030	A	-	-	3
Descriptions	45 = Indoor Unit	VM = VRF	A = Outside Air C = Compact 4-Way Cassette D = Multipoint Distribution Controller F = 4-Way Cassette H = High Static Ducted Unit I = 1-Way Cassette L = Low Static Ducted Unit M = Medium Static Ducted Unit R = Floor Console (Recessed) U = Underceiling / Floor Console V = Vertical AHU W = High Wall Z = Reheat Unit	005 = 5000 007 = 7000 009 = 9000 012 = 12000 015 = 15000 018 = 18000 024 = 24000 030 = 30000 036 = 36000 048 = 48000 054 = 54000 060 = 60000 072 = 72000 096 = 96000	- = No Revision A = Design Revision B = Design Revision	- = Undefined	- = Undefined	3 = 208/230-1-60

